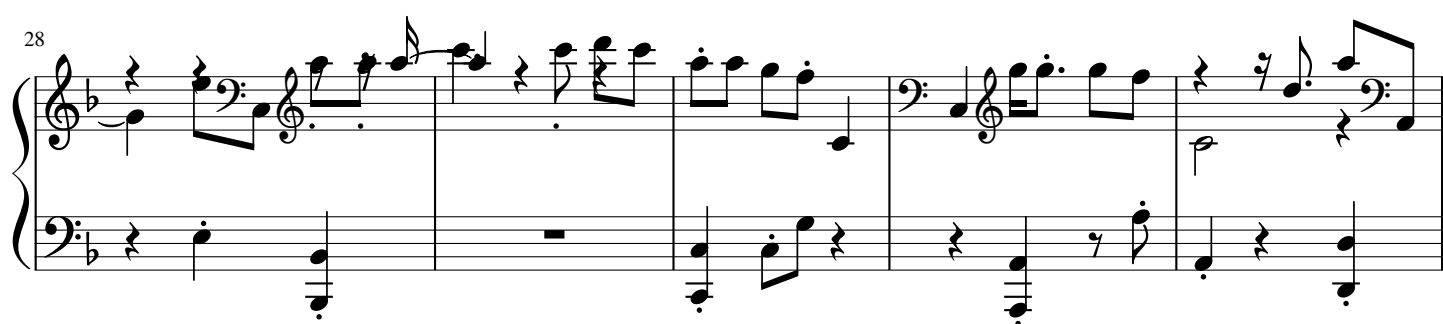
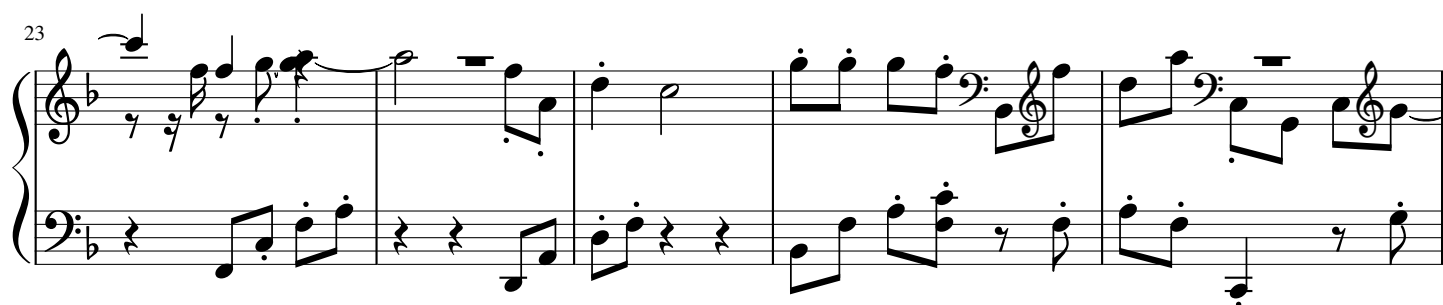
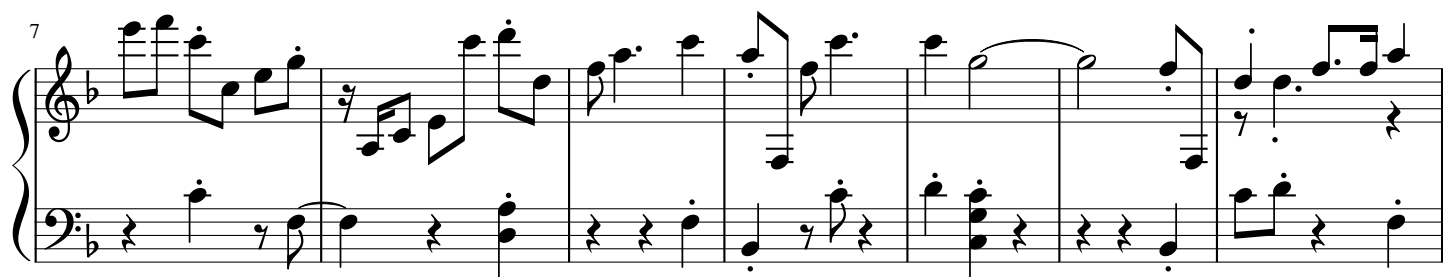
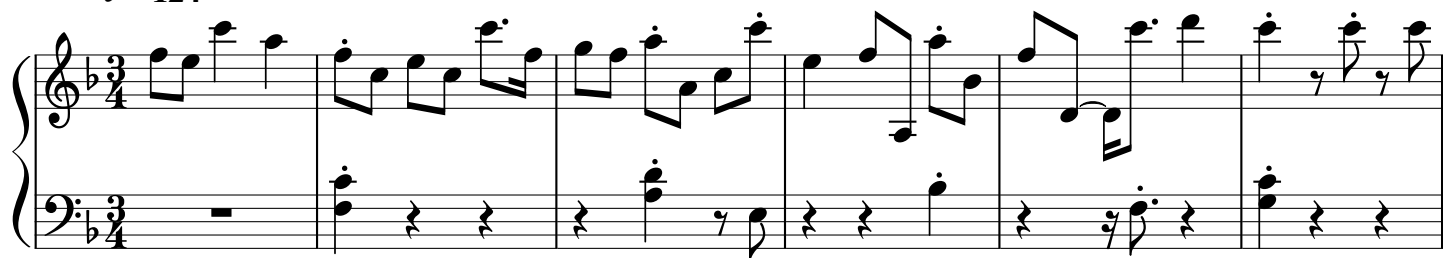
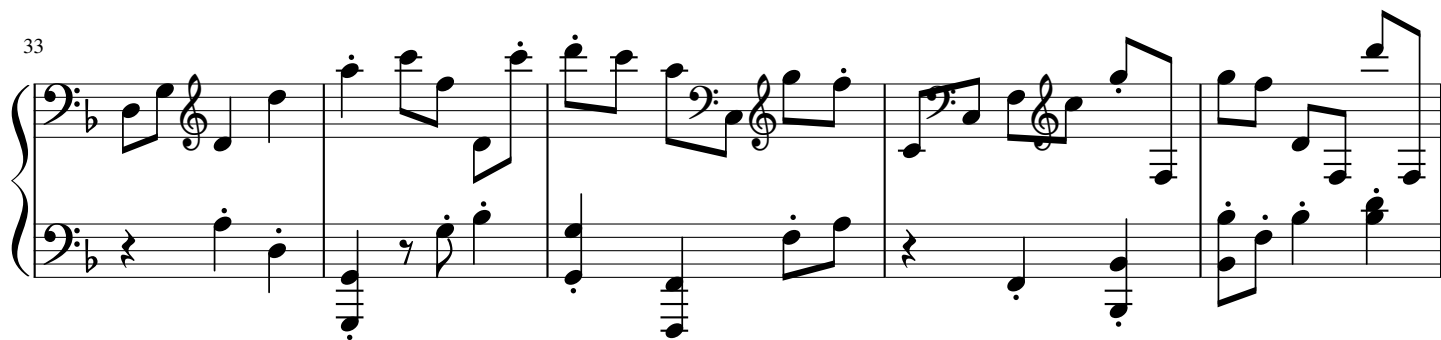


$\text{♩} = 124$



33



38



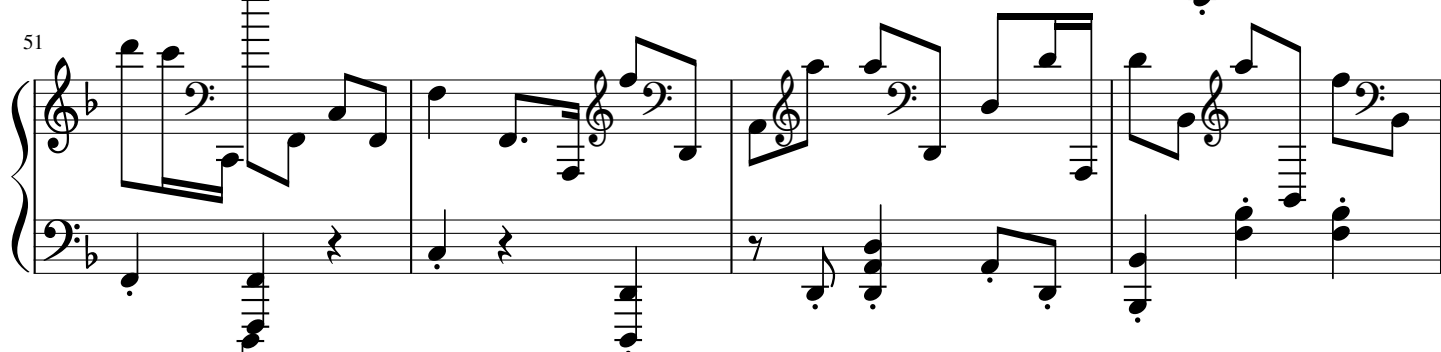
42



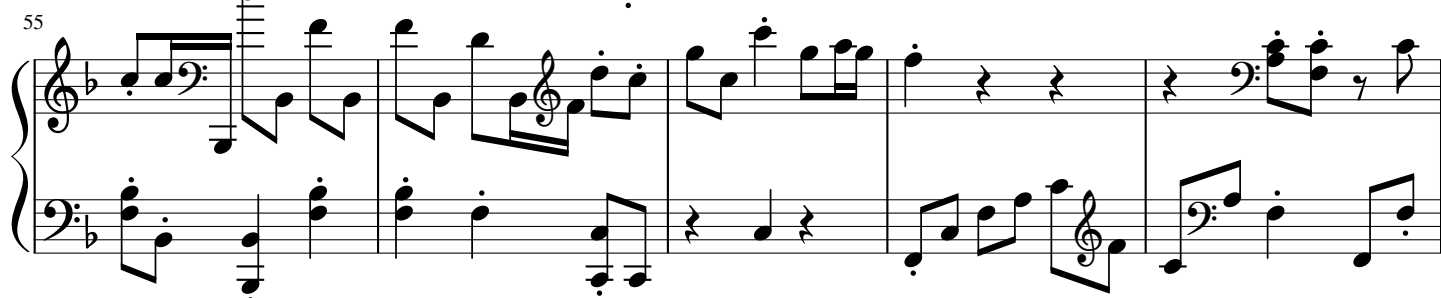
47



51



55



60

System 1 (Measures 60-64): The treble staff begins with a half note G4, followed by quarter notes A4, B4, and C5. The bass staff has a half rest in measure 60, followed by quarter notes G3, F3, and E3 in measures 61-63, and a half note D3 in measure 64.

65

System 2 (Measures 65-69): The treble staff has a half rest in measure 65, followed by quarter notes G4, F4, and E4 in measures 66-68, and a half note D4 in measure 69. The bass staff has a half rest in measure 65, followed by quarter notes G3, F3, and E3 in measures 66-68, and a half note D3 in measure 69.

71

System 3 (Measures 71-75): The treble staff begins with a half note G4, followed by quarter notes A4, B4, and C5. The bass staff has a half rest in measure 71, followed by quarter notes G3, F3, and E3 in measures 72-74, and a half note D3 in measure 75.

76

System 4 (Measures 76-80): The treble staff begins with a half note G4, followed by quarter notes A4, B4, and C5. The bass staff has a half rest in measure 76, followed by quarter notes G3, F3, and E3 in measures 77-79, and a half note D3 in measure 80.

81

System 5 (Measures 81-87): The treble staff begins with a half note G4, followed by quarter notes A4, B4, and C5. The bass staff has a half rest in measure 81, followed by quarter notes G3, F3, and E3 in measures 82-86, and a half note D3 in measure 87.

88

System 6 (Measures 88-92): The treble staff begins with a half note G4, followed by quarter notes A4, B4, and C5. The bass staff has a half rest in measure 88, followed by quarter notes G3, F3, and E3 in measures 89-91, and a half note D3 in measure 92.

94

System 1 (Measures 94-97): Treble and bass staves. Key signature: one flat. The melody in the treble staff consists of eighth and quarter notes. The bass staff provides harmonic support with chords and single notes.

98

System 2 (Measures 98-101): Treble and bass staves. The treble staff continues the melodic line with eighth notes and quarter notes. The bass staff features a more active line with eighth notes and quarter notes.

102

System 3 (Measures 102-106): Treble and bass staves. The treble staff has a more complex melodic line with eighth and sixteenth notes. The bass staff continues with a steady harmonic accompaniment.

107

System 4 (Measures 107-110): Treble and bass staves. The treble staff features a melodic line with eighth and quarter notes. The bass staff provides a steady accompaniment with chords and single notes.

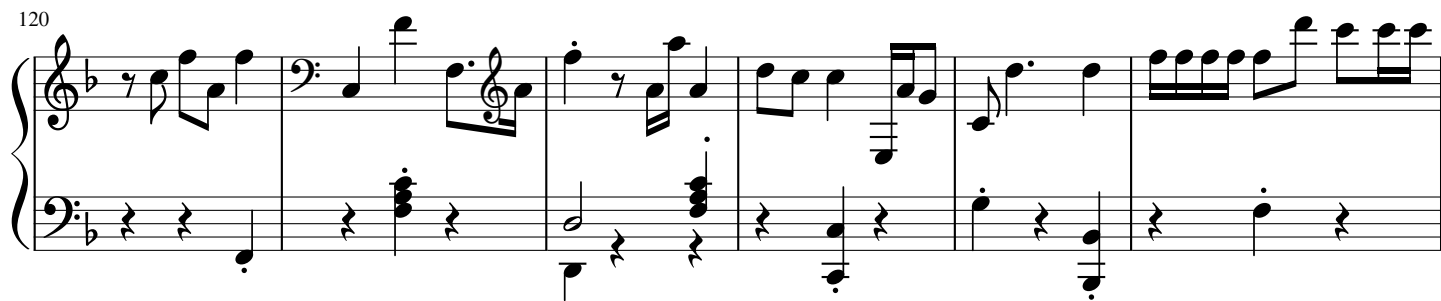
111

System 5 (Measures 111-114): Treble and bass staves. The treble staff continues the melodic development with eighth and quarter notes. The bass staff maintains the harmonic accompaniment.

115

System 6 (Measures 115-118): Treble and bass staves. The treble staff features a melodic line with eighth and quarter notes. The bass staff provides a steady accompaniment with chords and single notes.

120



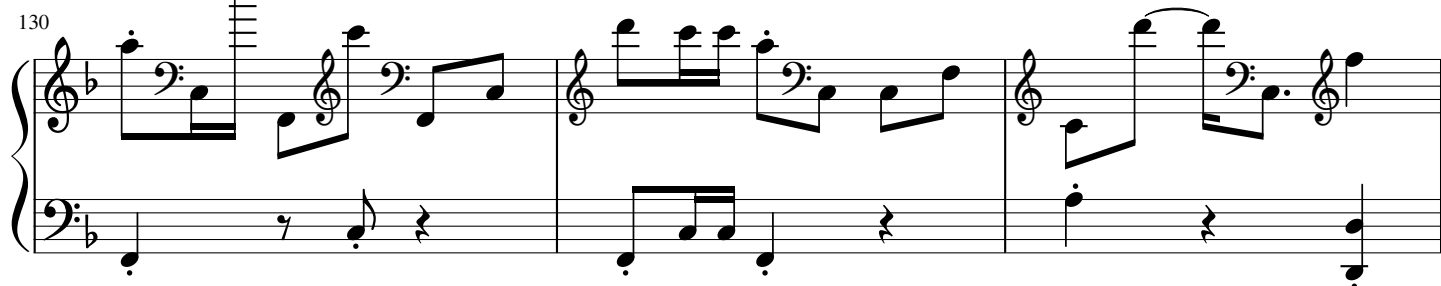
System 120-125: Treble and bass staves. Treble staff contains eighth and sixteenth notes, some beamed. Bass staff contains whole and half notes, some with rests.

126



System 126-131: Treble and bass staves. Treble staff contains eighth and sixteenth notes, some beamed. Bass staff contains whole and half notes, some with rests.

130



System 130-135: Treble and bass staves. Treble staff contains eighth and sixteenth notes, some beamed. Bass staff contains whole and half notes, some with rests.

133



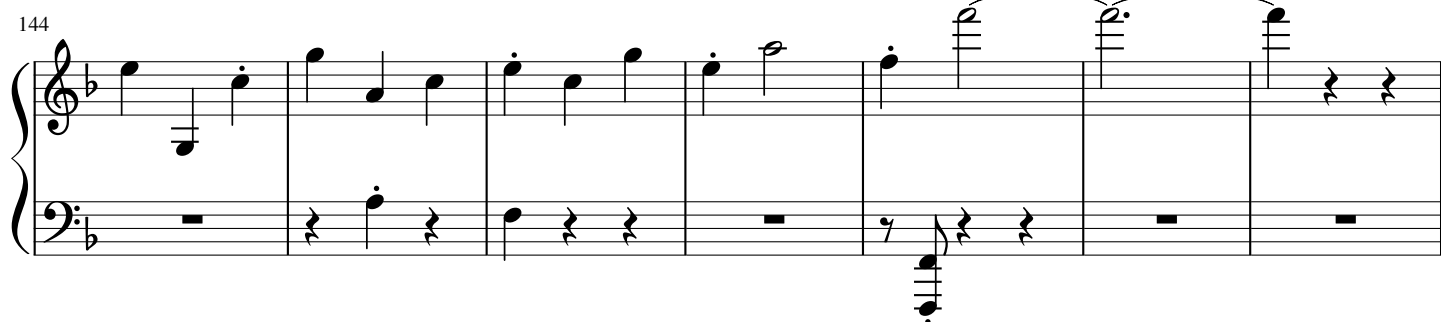
System 133-138: Treble and bass staves. Treble staff contains eighth and sixteenth notes, some beamed. Bass staff contains whole and half notes, some with rests.

137



System 137-143: Treble and bass staves. Treble staff contains eighth and sixteenth notes, some beamed. Bass staff contains whole and half notes, some with rests.

144



System 144-150: Treble and bass staves. Treble staff contains eighth and sixteenth notes, some beamed. Bass staff contains whole and half notes, some with rests.